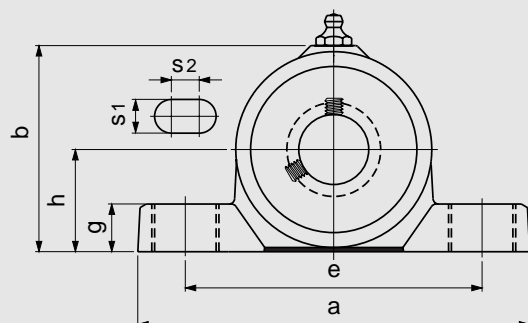
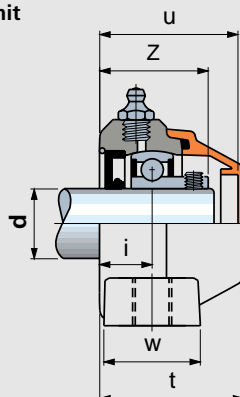


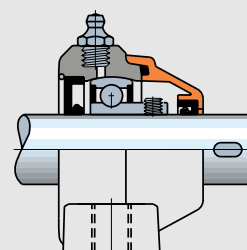
Series UCP/C



Closed unit



Open unit



Shaft dia. d mm	Bearing type	Code		Dimensions in mm													Weight Kg	Application characteristics
		Closed unit	Open unit	e	a	h	b	s1	s2	g	w	i	Z	u	t	Bearing		
PA FV polyamide housing																		
20	UCP 204 C	682941	682931	96	128	33,3	67	12	10	17	30	18,9	37,2	47,7	49,7	YAT 204 2	0,27	<ul style="list-style-type: none"> • High mechanical and heat resistance • Proof to dust, humidity, washouts, steam, average aggressive chemical agents
25	UCP 205 C	646511	646521	106	140	36,5	75	12	10	17	34,5	18,8	38,3	49,5	51,5	YAT 205 2	0,33	
30	UCP 206 C	646531	646541	121	163	42,9	88	14	10	20	36	19,7	40,7	53	55	YAT 206 2	0,49	
35	UCP 207 C	646551	646561	126	167	47,6	98	14	10	20	38,6	21,3	44,6	59	61	YAT 207 2	0,64	
40	UCP 208 C	683041	683031	136	185	50	102	14	10	20	38,6	25	50,3	64,5	66,5	YAT 208 2	0,84	
PP FV polypropylene housing																		
20	UCP 204 C	601932	601942	96	128	33,3	67	12	10	17	30	18,9	37,2	47,7	49,7	YAT 204 2	0,27	<ul style="list-style-type: none"> • Proof to highly aggressive chemical agents
25	UCP 205 C	601952	601962	106	140	36,5	75	12	10	17	34,5	18,8	38,3	49,5	51,5	YAT 205 2	0,33	
30	UCP 206 C	601972	601982	121	163	42,9	88	14	10	20	36	19,7	40,7	53	55	YAT 206 2	0,49	
35	UCP 207 C	601992	602002	126	167	47,6	98	14	10	20	38,6	21,3	44,6	59	61	YAT 207 2	0,64	
40	UCP 208 C	602012	602022	136	185	50	102	14	10	20	38,6	25	50,3	64,5	66,5	YAT 208 2	0,84	

YAT 2 Bearing

Chrome alloy steel • Grub screws shaft locking
 • Superagriseal unit • Prelubricated with lithium / calcium grease • Can be relubricated • Self aligning within 2° max
 Dimensions and characteristics at page 38-39.

PA FV polyamide housing

Housing in reinforced polyamide PA FV resin (black)
 • Protection cover in reinforced polypropylene PP FV (orange) • Seal and O-Ring in NBR rubber • Ball type nickel plated brass greasing nipple • Reinforcing bushings on mounting holes and washers in stainless steel AISI 304 • Stainless steel AISI 303 safety ring
 • Seal to close space between bearing and mounting area in PVC (black)

PP FV polypropylene housing

Housing in reinforced polypropylene PP FV resin (black)
 • Protection cover in reinforced polypropylene PP FV (orange) • Seal and O-Ring in Viton rubber • Ball type stainless steel AISI 316 greasing nipple • Reinforcing bushings on mounting holes and washers in stainless steel AISI 316 • Stainless steel AISI 316 safety ring
 • Seal to close space between bearing and mounting area in PVC (black)

Shaft dia. d mm	Bearing type	Bearing load (N)			Bearing unit max. static load (N)						Continuous operating temperature (°C)			
		Load coefficient		Max. axial load ²⁾	Fr ↑		Fr ↓		Fr →		in air		in hot water	
		dynamic C	static Co		PA FV	PP FV	PA FV	PP FV	PA FV	PP FV	PA FV	PP FV	PA FV	PP FV
20	UCP 204 C	9800	6550	1960	4000	1800	18000	5000	5000	3000	- 20 a + 90	- 20 a + 70	80	100
25	UCP 205 C	10800	7800	2160	6000	1800	18000	5000	6000	3000				
30	UCP 206 C	15000	11200	3000	7000	2000	25000	7000	8000	4000				
35	UCP 207 C	19600	15300	3920	8000	2200	27000	7500	10000	4200				
40	UCP 208 C	23600	19000	4720	8000	2200	27000	7500	10000	4200				

2) = The grub screws blocking method allows a maximum axial load of: 0,20 • C (with non hardened shafts and grub screws tightened with recommended torsion couples).
 The radial static loads Fr have been established in laboratory conditions on housings complete with bearings.



Accessories / page 34

- Quick coupler for remote lubrication
- Grease nipple cover

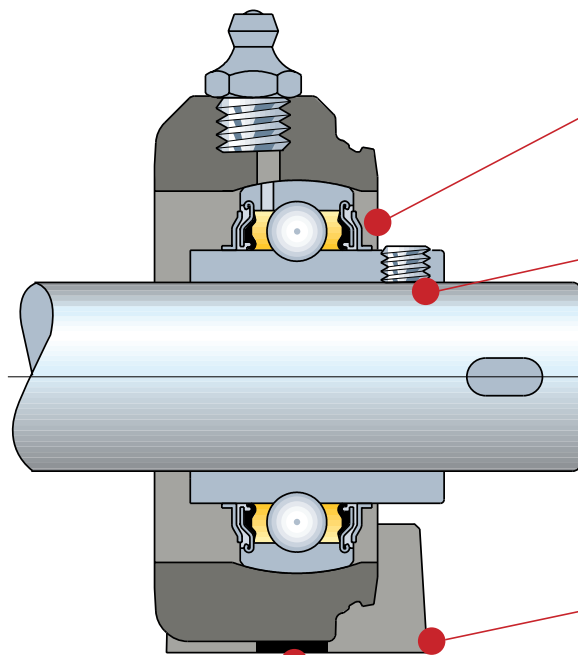


Spare parts / page 35-36

- Closed or open protection cover
- Ball type greasing nipple
- Sealing ring (opposite side to protection cover)
- Seal to close space between support and mounting area
- Safety ring



Protection cover
Optional



Moderate protection

The bearings feature Superagriseal unit plus centrifuging ring for guaranteed protection against dust and non corrosive agents. For critical applications use the version with stainless steel AISI 420 bearing

Locking by grub screws

The bearing can be locked onto the shaft by grub screws

Protection cover

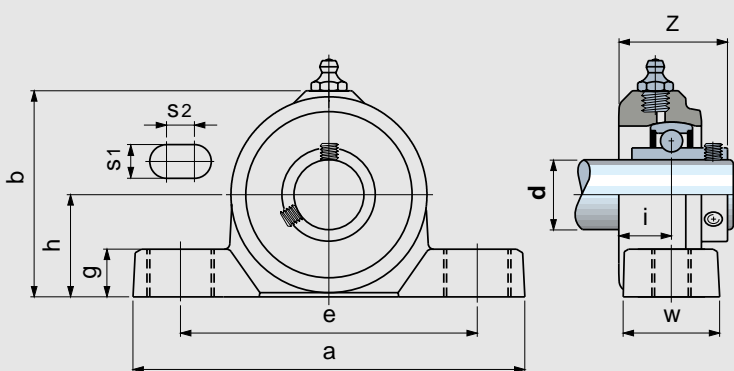
It is supplied as an **optional accessory**. They are available in the closed or open version, they protect the bearing and avoid contact with the rotating shaft (personnel protection). Clip-on design. Can be removed and replaced at will.

ISO dimensions

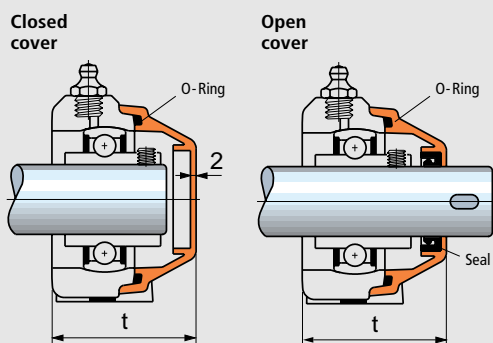
The overall dimensions can be interchanged with the corresponding cast iron type bearings

Seal to close space between bearing and mounting area

Series UCP



Protection cover (Optional)



For the codenumbers of the protection covers, O-rings and seals refer to pages 35-36

Shaft dia. d mm	Bearing type	Code	Dimensions in mm										Bearing	t	Weight Kg	Application characteristics	
			Bearing	e	a	h	b	s1	s2	g	w	i					Z
PA FV polyamide housing / steel bearing																	
20	UCP 204	682921	96	128	33,3	67	12	10	17	30	18,9	37,2	YAR 204 2F	49,7	0,27	<ul style="list-style-type: none"> • High mechanical and heat resistance • Positive sealing capacity against dust, non corrosive agents 	
25	UCP 205	648781	106	140	36,5	75	12	10	17	34,5	18,8	38,6	YAR 205 2F	51,5	0,33		
30	UCP 206	648791	121	163	42,9	88	14	10	20	36	19,7	41,9	YAR 206 2F	55	0,49		
35	UCP 207	648801	126	167	47,6	98	14	10	20	38,6	21,3	46,7	YAR 207 2F	61	0,64		
40	UCP 208	683021	136	185	50	102	14	10	20	38,6	25	55,2	YAR 208 2F	66,5	0,84		
PP FV polypropylene housing / stainless steel AISI 420 bearing																	
20	UCP 204	602032	96	128	33,3	67	12	10	17	30	18,9	37,2	YAR 204 2RF/HV	49,7	0,27	<ul style="list-style-type: none"> • Positive sealing capacity against humidity, vapours, salty environments, slightly corrosive chemical agents 	
25	UCP 205	602042	106	140	36,5	75	12	10	17	34,5	18,8	38,6	YAR 205 2RF/HV	51,5	0,33		
30	UCP 206	602052	121	163	42,9	88	14	10	20	36	19,7	41,9	YAR 206 2RF/HV	55	0,49		
35	UCP 207	602062	126	167	47,6	98	14	10	20	38,6	21,3	46,7	YAR 207 2RF/HV	61	0,64		
40	UCP 208	602072	136	185	50	102	14	10	20	38,6	25	55,2	YAR 208 2RF/HV	66,5	0,84		

YAR 2F - YAR 2RF/HV bearings

Shaft locking by grub screws
 • Superagriséal units plus centrifuging ring (steel version)
 • Superagriséal units plus rubberised centrifuging ring (stainless steel version)
 • Prelubricated with lithium / calcium grease
 • Can be relubricated
 • Self aligning within 2.5° max
 Dimensions and characteristics at page 38-39.

PA FV polyamide housing

Housing in reinforced polyamide PA FV resin (black)
 • Chrome alloy steel bearing
 • Ball type nickel plated brass greasing nipple
 • Reinforcing bushings on mounting holes and washers in stainless steel AISI 304
 • Seal to close space between bearing and mounting area in PVC (black)

PP FV polypropylene housing

Housing in reinforced polypropylene PP FV resin (black)
 • Stainless steel AISI 420 bearing
 • Ball type stainless steel AISI 316 greasing nipple
 • Reinforcing bushings on mounting holes and washers in stainless steel AISI 316
 • Seal to close space between bearing and mounting area in PVC (black)

Protection cover

Covers are supplied without seals. To increase protection it is recommended to use them with O-Ring and seals unit (supplied separately).
 • Cover in reinforced polypropylene PP FV (orange)
 • Seals in NBR rubber (for PA FV support) / in Viton rubber (for PP FV support)
 • Different colours on request

Shaft dia. d mm	Bearing type	Bearing load (N)				Bearing unit max. static load (N)						Continuous operating temperature (°C)			
		Load coefficient		Max. axial load	Fr ↑		Fr ↓		Fr →		in air		in hot water		
		dynamic C	static Co		PA FV	PP FV	PA FV	PP FV	PA FV	PP FV	PA FV	PP FV	PA FV	PP FV	
20	UCP 204	9800 (8300)	6550 (6550)	1960 (1660)	4000	1800	18000	5000	5000	3000	- 20 a + 90	- 20 a + 70	80	100	
25	UCP 205	10800 (9150)	7800 (7800)	2160 (1830)	6000	1800	18000	5000	6000	3000					
30	UCP 206	15000 (12500)	11200 (11200)	3000 (2500)	7000	2000	25000	7000	8000	4000					
35	UCP 207	19600 (16600)	15300 (15300)	3920 (3320)	8000	2200	27000	7500	10000	4200					
40	UCP 208	23600 (20000)	19000 (19000)	4720 (4000)	8000	2200	27000	7500	10000	4200					

Bracketed figures refer to stainless steel bearings.

2) = The grub screws blocking method allows a maximum axial load of: 0,20 • C (with non hardened shafts and grub screws tightened with recommended torsion couples). The radial static loads Fr have been established in laboratory conditions on housings complete with bearings.



Accessories / page 34

- Quick coupler for remote lubrication
- Grease nipple cover



Spare parts / page 35-36

- Ball type grease nipple
- Seal to close space between bearing and mounting area
- Closed or open protection cover
- Seals for protection cover