



Please contact your Rexnord Representative with any questions:

Rexnord FlatTop Europe
Einsteinstraat 1, 2691 GV
's-Gravenzande
The Netherlands
Phone: +31 174 445 111
After Hours Emergency
Phone: +31 174 445 112
(including countries not listed)

Rexnord FlatTop Italy
Phone: +39 0522 639333

Rexnord FlatTop Germany
Phone: 0800 588 8083

Rexnord FlatTop France
Phone: 0805 540 444

Rexnord FlatTop India
Phone: +91 98813 99026

Rexnord FlatTop China
Phone: +86 21 66188307

Rexnord FlatTop North America
1272 Dakota Drive
Grafton, WI, 53024 USA
Phone: 1-262-376-4700

www.rexnord.com
www.rexnordflattop.com

Rexnord 3120 Series MatTop Chains Breakthrough Automotive Solution

The Rexnord 3120 MatTop® Series Chain offers a maintenance free chain system widely used in automotive and heavy-duty industrial applications. The 3120 Series Chain offers high strength and stiffness. These attributes provide continuously smooth operation under heavily loaded conditions.

Automotive

Automotive plants benefit from the 3120 Series Chain thanks to trouble-free operation, increased safety and a lower TCO (Total-Cost-of-Ownership).

Robust Design

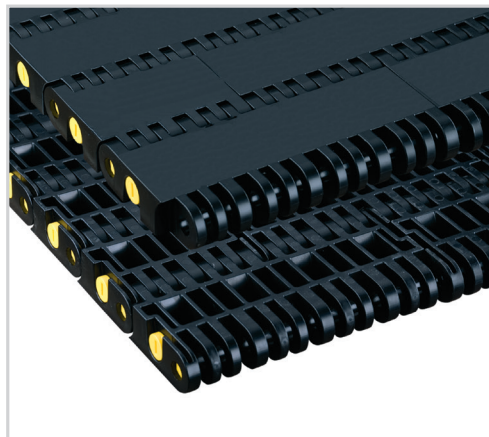
The 3120 Series Chain is designed for industrial-type applications as: car washes, skid handling, people movers, pallet handling and automotive parts handling. The robust design utilizes Rexnord's patented Twistlock® plug as well as a half inch diameter polyester pin. For this chain one inch (24.4mm) and two inch (50.8mm) pusher attachments are available. The 3120 Series Chain is available in a: SolidTop RubberTop® and SafetyTop execution.

Easy Technology Conversion

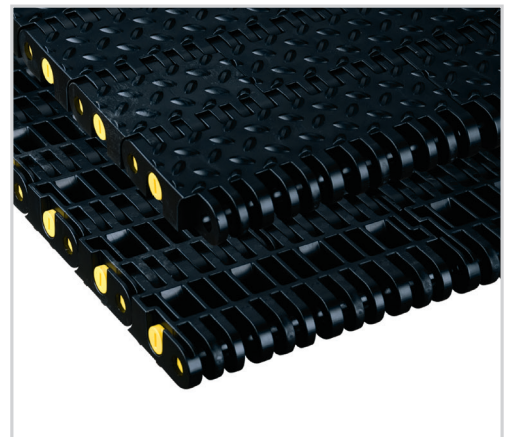
The 3120 Series Chain expands the possibilities to easily and economically convert from your existing technology. Reinforced rubber belt applications can be converted to a reliable MatTop technology handling solution, using the existing conveyor structure and applying new guides and drive sprockets.

Operation Characteristics:

- Insensitive to automotive liquids
- Positive drive sprocket eliminates slippage and prevents the skid from twisting during conveying
- Energy savings due to full plastic chain design which offers reduced weight and low-friction
- High stiffness through narrow hinge design and large pin diameter
- No tensioning of the chain is required
- Easy installation and maintenance
- Chain damage can be repaired by replacing a single link at a time



3120 Series SolidTop Chain



3129 Series SafetyTop Chain

Energy Saving

The proven chain design provides high-stiffness, minimizing the need for stainless steel pins. The result is less chain weight and a reduction in energy consumption.

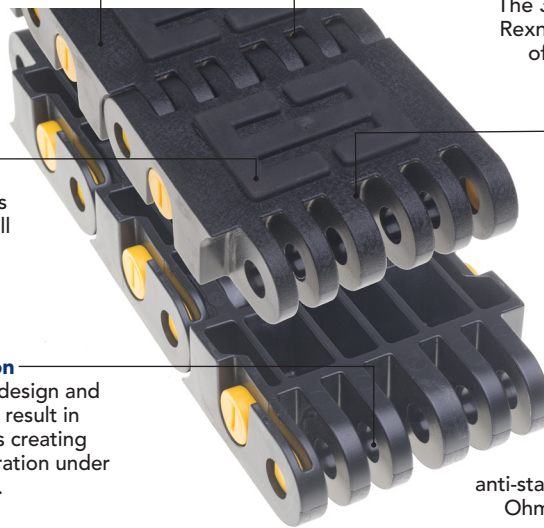
Reliable Handling

Optional high-friction RubberTop surface ensures positive SKID position at all times during start-stop or indexing operations.

Smooth Operation

The narrow hinge design and large pin diameter result in high chain stiffness creating smooth chain operation under all load conditions.

3125 Series RubberTop



Drive

The 3120 Series Chain is driven by Rexnord's proven sprocket design offering a standard double row tooth (H-style) configuration.

Performance

Performance can be tailored to applications using either Rexnord's smooth SolidTop or high-friction RubberTop surface.

Material Selection

The 3120 Series Chain is available in wear resistant polyacetal (BSM) or high capacity antistatic polyacetal (HCAS). HCAS is combining strength with superior anti-static properties (surface resistivity $10^{11} - 10^{13}$ Ohm/sq). Both materials are resistant to fluids commonly used in the automotive industry.

Chain Type	Code Number	Working Load (max)		Back-flex Radius (min)
		lbs / N	lbs/ft kg/m	
BSM3125	I3125BSMKxx	2102 / 9350	5.67 / 2.57	3.00 / 76.2
BYSM3125	I3125BYSMK	2102 / 9350	5.67 / 2.57	3.00 / 76.2
BSM3125 RT-K4 MTW	876.29.10	2102 / 9350	5.78 / 2.62	3.00 / 76.2
BSM3129	I3129BSMKxx	2102 / 9350	5.78 / 2.62	3.00 / 76.2
BYSM3129	I3125BYSMK	2102 / 9350	5.78 / 2.62	3.00 / 76.2

Sprocket Type	Code Number	Pitch Diameter		Bore Size		Hub Width	
		in / mm	in / mm	in / mm	in / mm		
KU3120 T09 S60	114-5171-8	8.771 / 222.8	2.36 x 2.36 / 60 x 60	1.88 / 47.8			
KU3120 T09 S90	114-5171-14	8.771 / 222.8	3.54 x 3.54 / 90 x 90	1.88 / 47.8			
KU3120 T10 S60	114-5172-8	9.708 / 246.6	2.36 x 2.36 / 60 x 60	1.88 / 47.8			
KU3120 T10 S90	114-5172-14	9.708 / 246.6	3.54 x 3.54 / 90 x 90	1.88 / 47.8			
KU3120 T11 S60	114-5173-8	10.650 / 270	2.36 x 2.36 / 60 x 60	1.88 / 47.8			
KU3120 T11 S90	114-5172-14	10.650 / 270	3.54 x 3.54 / 90 x 90	1.88 / 47.8			

