

## Rexnord® TableTop® and MatTop® Chains



## 2010-SERIES INTEGRATED SIDERAIL

FLATTOP



## Rexnord Industries, LLC

For more than one hundred years, Rexnord has provided superior power transmission, bearing, aerospace and specialty components to industry across the globe. We pride ourselves in commitment and dedication to the customer – from development to manufacturing, from installation to service.

This commitment and dedication are the centerpieces as Rexnord Industries begins our next century of growth. We are taking on new challenges and opportunities with a fresh look on the future.

**Precision. Power. Performance.<sup>SM</sup>**

## FlatTop Global's Vision

To be the best in the world at continuously improving customers' productivity through superior material handling solutions.

## Rexnord Industries, LLC Mission

To be a leading marketer and world class manufacturer of precision motion technology products & systems and provide superior growth and command sustainable competitive advantage.

# CONTENTS

- 4 SAFETY CONSIDERATIONS
- 5 1.1 Introduction
- 6 *Current Systems*
- 1.2 Why Change?
- 10 *Rexnord Intergrated SideRail*
- 1.3 New Systems
- 1.4 Existing Systems
- 12 *Rexnord Intergrated SideRail*
- 1.5 Check list

## SAFETY CONSIDERATIONS

**PRODUCT SAFETY:** Products designed and manufactured by Rexnord are capable of being used in a safe manner; but Rexnord cannot warrant their safety under all circumstances. **PURCHASER MUST INSTALL AND USE THE PRODUCTS IN SAFE AND LAWFUL MANNER IN COMPLIANCE WITH APPLICABLE HEALTH AND SAFETY REGULATIONS AND LAWS AND GENERAL STANDARDS OF REASONABLE CARE; AND IF PURCHASER FAILS TO DO SO, PURCHASER SHALL INDEMNIFY REXNORD FROM ANY LOSS, COST OR EXPENSE RESULTING DIRECTLY OR INDIRECTLY FROM SUCH FAILURE.**

**SAFETY DEVICES:** Products are provided with only safety devices identified herein. **IT IS THE RESPONSIBILITY OF PURCHASER TO FURNISH APPROPRIATE GUARDS FOR MACHINERY PARTS** in compliance with MSHA or OSHA Standards, as well as any other safety devices desired by Purchaser and/or required by law; and **IF PURCHASER FAILS TO DO SO, PURCHASER SHALL INDEMNIFY REXNORD FROM ANY LOSS, COST OR EXPENSE RESULTING DIRECTLY OR INDIRECTLY FROM SUCH FAILURE.**

### General Safety Precautions:

- To avoid personal injury, all machinery must be turned off and locked out, prior to chain installation, inspection, maintenance and removal.
- Always use safety glasses to protect eyes. Wear protective clothing, gloves and safety shoes
- Support the chain to prevent uncontrolled movement of the chain and parts
- Maintain tools in proper condition and assure their proper use. Use of chain assembly tools is recommended when applicable.
- Do not attempt to connect or disconnect chain unless chain construction is clearly known and understood
- Do not reuse any sections of damaged chain because they may have been overloaded and weakened

If any flame cutting, welding, etc. is to occur in the conveyor vicinity, take adequate precautions to insure that no burning of any chain or other components occurs. If adequate protection cannot be provided, remove the chain and other plastic components from the conveyor and store in a safe location. Thermoplastic and similar materials can burn and give off toxic fumes.

**DO NOT INSTALL, OPERATE OR PERFORM MAINTENANCE ON THESE PRODUCTS UNTIL YOU READ AND UNDERSTAND THE INSTRUCTIONS CONTAINED IN THIS MANUAL.**

---

# INTRODUCTION

## 1.1 INTRODUCTION

Inclined conveyors are one of the areas subject to product loss and difficult cleaning. Inclined conveyors are a necessary means of bringing product to a higher level for processing or packaging. The most used type of MatTop chain on this kind of conveyor is the 2-inch pitch food grade execution, like the Rexnord 2010 series.

Rexnord is introducing a new type of side rail, the Integrated SideRail. This is a side rail that retains product, travels with the chain and is an integral part of the chain design. However, this system is very different from current two piece assembled or one piece molded side guard executions.

This manual describes the easy steps for converting your current system to the new efficiency improving Rexnord 2010 Integrated **SideRail**

# CURRENT SYSTEMS

## 1.2 WHY CHANGE?

In processing lines currently several system are being used in combination with 2-inch pitch food grade Modular belting/MatTop chains:

1. Flighted chains with static side guides
2. Flighted chains with conventional sideguards (Loose elements to the chain)
3. Flighted chains in combination with Integrated (or Molded-In) side-guards

Although the functionality of all these systems should be the same; bringing product to a higher or lower level on an inclined or declined conveyor, in the field they have their own specific issues causing down time and product loss.

### Static guides

Conveyors with static guides trap the product between the moving plastic modular belt/chain and stationary PE or stainless steel side walls that are mounted to the conveyor. This results in several disadvantages:



- More expensive conveyor construction because of the additional material needed to create the static guides and mounting supports.
- Installation and adjustment of the guides is time consuming and can be fairly complicated.
  - o The guides need to be mounted, but also carefully adjusted in relation to the position of the pusher attachment. If the guides are too far away from the pusher attachment excessive amounts of product can escape downwards in between the guide and the pusher.
  - o If the guides are too high in relation to the belt surface product can escape out the side of the conveyor. However, if the static guides are too close to the chain or to the pusher, they can jam the chain or wear out the chain surface.

## CURRENT SYSTEMS

- Cleaning of the inclined conveyor is often not easy because of their height. The chain rotates and passes the lowest point in the conveyor and therefore can be cleaned. However, the static guides at the top of the conveyor cannot be reached easily. This is an issue as there are parts of the conveyor that actively touch the product. If the guides can be opened up or removed for enhanced cleaning, they have to be accurately re-positioned prior to start-up, which again is time consuming and needs to be done accurately.

The advantage of static guards is that they can be custom made to a desired height to create the required capacity of the conveyor. In practice this means they can be used to accompany up to a 6-inch high pusher attachment that are typically used on plastic modular belt/chain, optimizing conveyor capacities.

### Conventional two piece side guards

Two piece side guards are the conventional system; they exist as loose parts that are connected with the chain using the chain connection pin. Although this system eliminates the installation and cost issues of static guides there are still some disadvantages:



- Due to their connection with the chain, a pin-hinge construction, sideguards are not very stable and the top of the sideguards can move to the left and the right rather easily. This makes the conveyor design for chains with conventional side guards more complicated. Every construction element that could cause the side guards to jam during operation should be addressed thus requiring more chain clearance through out the system.
- As a standard the conventional side guards often are not positioned directly against the pusher. This is done to avoid jamming between the sideguards and the pusher when for-flexing around a sprocket and flexing back when entering the conveyor return. If an opening between the pusher and side guard is allowed, product is not properly retained.
- Conventional side guards have a clear orientation in relation to the direction of chain travel. This is because they are located in an angled overlapped position. If they are set to retain the product in an optimum way, they are more sensitive to jamming in the conveyor frame. If they are set not to jam (opposite overlap), product can get caught in between them.

## CURRENT SYSTEMS

- The conventional sideguards are available up to 4-inch high and therefore can not be combined with 6-inch tall pusher flight, limiting the capacity of the inclined conveyor.
- However, because the sideguards located in an angled overlapped position they cannot be properly reached for cleaning and large surface areas remain unexposed. Residual coatings like spices or flavourings can be very difficult to clean when caught in the side guard area.

### Molded one piece side guards

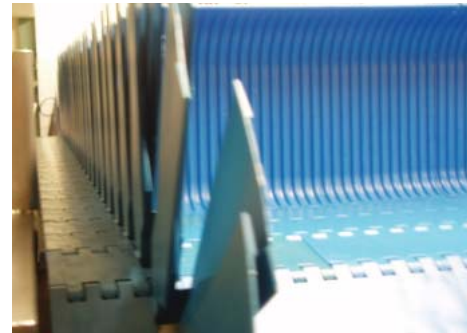
Current molded one piece side guards are being offered. These systems address the issue of the instability of conventional side guards and the accurate positioning need of static side guides as well. However, in their current design there are two major disadvantages:

- The maximum height of the current molded one piece side guards design is limited to 4-inches. This restricts the optimum conveyor capacity when utilized in combination with 6-inch straight or curved pusher flights.
- The design of the current molded one piece side guard is rectangular with out an overlap between the blade elements from pitch to pitch. This allows the side guards to open up in two important positions and cause (significant) product loss:
  - o When the chain reaches the crest of the incline and begins to for-flex to the horizontal section or downwards.
  - o When product is unloaded from the conveyor at the position of the drive sprockets.

# REXNORD INTEGRATED SIDERAIL

## Integrated Side Rail (ISR)

Based on feedback from the market Rexnord has designed the new Integrated SideRail to address the deficiencies of most conventional systems. The system consists of 2 integrated staggered blades per end module that interact together when the chain operates; this system provides the following advantages and features:



- The blades overlap in such a way that allows the Integrated SideRail to always stay fully closed through out the chain cycle. This includes when flexing over a sprocket and through all angled transitions. The orientation of the Integrated SideRail blades is such that the product is always guided to the inside of the chain when travelling up the incline. These features result in minimizing product loss and increasing throughput.
- Due to rigid design of the Integrated SideRail, the system is very stable and can work in accurately designed conveyors. This also minimizes any gap between the pusher flight and the side rail system as they can be positioned virtually against each other. This reduces product loss, damage and eliminates adjustment issues associated with other side rail systems.
- The Integrated SideRail can be used with a back-flex radius as small as 12-inch [305mm], meeting the industry standard for existing and new conveyors.
- The side indent is a fixed 2-inch [50,8mm] from the edge of the chain to the outboard side of the blade. This allows for an optimum chain support through out the return way. Also this side indent maximizes upgrade possibilities in existing conveyors [see paragraph 1.4].
- The Integrated SideRail remains overlapped through out the incline and when for-flexing around the sprocket. The minimum sprocket diameter for this is 6.5-inch [165mm, 10 teeth]. This optimizes the unloading of the conveyor without any product loss.
- Integrated SideRail maximizes the conveyor capacity due to the availability of a 4-inch [101,6mm] (**ISR4**) and 6-inch [152,6mm] (**ISR6**) high execution. This makes it possible to combine the system with any straight or curved pusher attachments when utilized with the 2-inch pitch 2010-series MatTop® chain.

## REXNORD INTEGRATED SIDERAIL

- This system is designed for easy cleaning. At the tail shaft the blades open up in a way that all areas and surfaces can be reached and cleaned easily. The base of the system is ported to allow the removal of possible fine product residue such as seasoning or flavouring.

### 1.3 NEW SYSTEMS

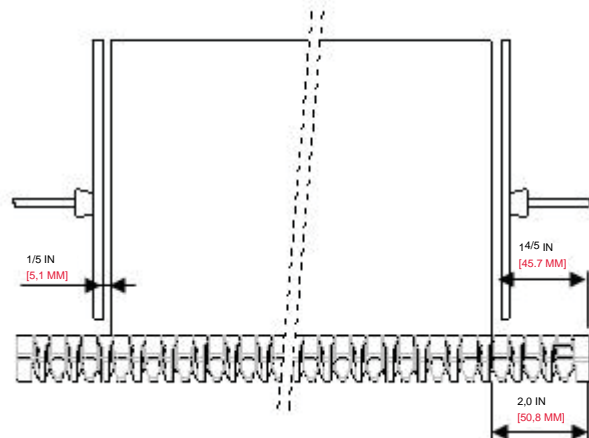
Obviously the Rexnord 2010 ISR system can be used on new equipment as well. In this case you will experience the easy and simple conveyor design needed for the 2010 ISR. Details about new conveyor design can be found in our engineering manual, section inclined conveyors. If you need this information and do not have it yet please contact our Application Engineering department at [AE.Europe@Rexnord.com](mailto:AE.Europe@Rexnord.com) (for Europe, Africa, Asia and South America) or [AE@Rexnord.com](mailto:AE@Rexnord.com) (for Mexico, United States and Canada) depending on your location.

### 1.4 EXISTING SYSTEMS

In the case of existing systems the conversion to the Rexnord 2010 Integrated SideRail is possible with minimal modifications. The most common retrofit situations are described below.

#### Static Guides

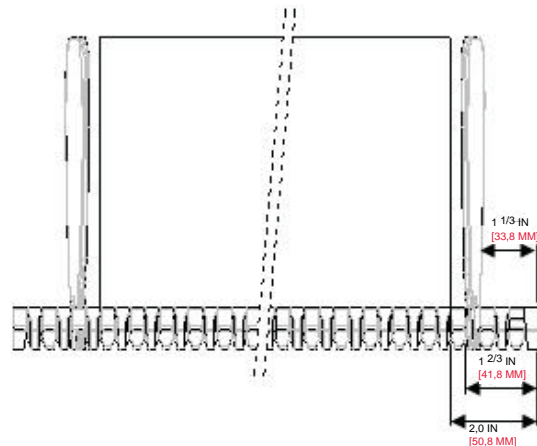
Conveyors with static guides typically use a 2-inch side indent (distance from the side of the chain to the side of the pusher attachment). The static guides need to be removed and the ISR chain can be installed. In the return way the Integrated SideRail can be implemented system because it falls within the outer most dimensions of the current pusher attachments. If desired the static guides could be left on the conveyor, however this would greatly reduce the overall cleanability. If the side indent is smaller than 2-inch the Rexnord 2010 Integrated SideRail can still be used. Only if the current side indent is larger than 2-inch more conveyor modifications are required.



# REXNORD INTEGRATED SIDERAIL

## Conventional side guards

In case of conventional sideguards, the current chain can simply be exchanged for a 2010 ISR chain. Due to the slightly larger side indent of the 2010 ISR (2-inch instead of 1 1/3 or 1 2/3 –inch), the ISR chain will always be within the current chains parameters, both in the carry and return way.



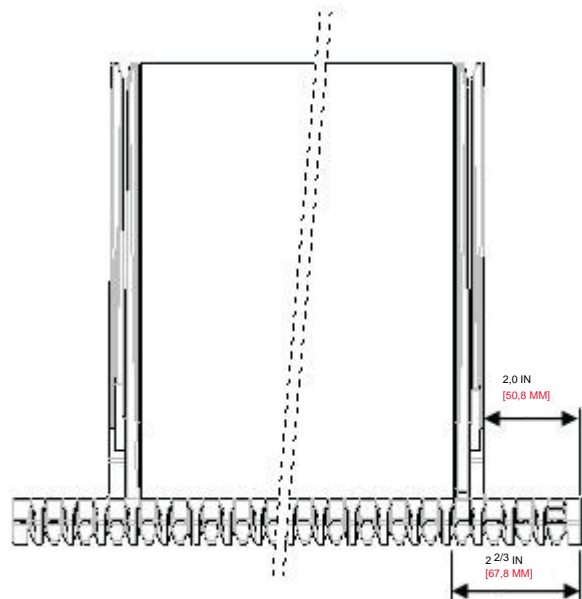
## Molded one piece side guards

The side indent of molded one piece side guards is the same as the up mentioned conventional side guard indent. Therefore the change to 2010 ISR is just as easy.

## 2010 Integrated SideRail (ISR)

The integrated siderail normally fits the current conveyor design. Besides the minor changes described above, the following points should be noticed:

- The guides (static or roller) that hold down the current chain can be used for the ISR chain as well. In case of a change from conventional side guards, these guides can be set somewhat further towards the chain (1/3-inch maximum).
- Some attention needs to be paid to the chain tension. The chain should not be tight but it is recommended to limited the amount of chain sag in the return part.
- If the current chain is not a Rexnord 2010-series chain, the drive sprockets need to be changed. If sprockets are being used on the idler shaft, these need to be replaced as well. Discs (or other systems not interacting with the chain hinges), normally can be re-used.



## REXNORD ISR CHECKLIST

- At the loading position of the conveyor the positioning of the infeed chute needs to be reviewed. Due to the slightly different position of 2010 ISR it must be made sure that product is loaded inside the Integrated SideRail system and not on top.

Besides the up mentioned recommendations, as with any renewal or conversion of conveyor Modular belt/chain the carry way and return way should be inspected on their general condition.

### 1.5 CHECKLIST

To determine if your conveyor can be changed to Rexnord Integrated SideRail the following checklist should be completed:

Item	Description	Yes/No
1	Define the current chain specification, is this a 2-inch pitch chain?	
2	Is the horizontal – incline backflex radius 12 inch [305mm] or larger (see fig 1)?	
3	Is the conveyor top radius 3½ inch [90mm] or large (see FIG 2)?	
4	Are the drive sprockets 10 teeth or more?	
5	Are the idler sprockets or disks larger than 6 ½ inch [165mm] diameter?	
6	Is the current side indent 2 inch [50,8mm] or smaller?	
7	Is the smallest chain backflex radius in the return part 12 inch [305mm] or larger?	

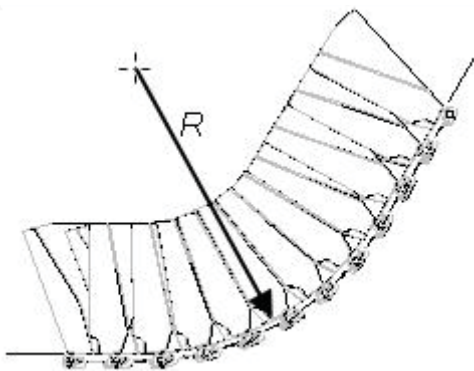


Figure 1. Back-Flex min. 12 inch [305mm]

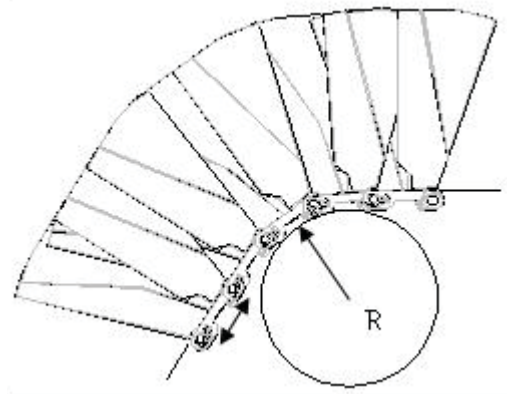


Figure 2. Conveyor Top Radius min. 3½ inch [90mm]

If all answers are YES, the conversion is truly simple. If one of the answers is NO, some slight conveyor modifications are required before Rexnord 2010 ISR can be installed. If you have some doubt or if one of more items above are answered with “NO” please contact our application engineers (see contact details in paragraph 1.3).

# NOTES

# World Class Customer Service

For more than 100 years, the dedicated people of Rexnord have delivered excellence in quality and service to our customers around the globe. Rexnord is a trusted name when it comes to providing skillfully engineered products that improve productivity and efficiency for industrial applications worldwide. We are committed to exceeding customer expectations in every area of our business: product design, application engineering, operations, and customer service.

Because of our customer focus, we are able to thoroughly understand the needs of your business and have the resources available to work closely with you to reduce maintenance costs, eliminate redundant inventories and prevent equipment down time.

Rexnord represents the most comprehensive portfolio of power transmission and conveying components in the world with the brands you know and trust.

\*\*\*\*\* are registered trademarks, and \$\$\$\$\$ are trademarks of Rexnord Industries, LLC. All rights reserved.

## WORLDWIDE CUSTOMER SERVICE

### AUSTRALIA

Rexnord Australia Pty. Ltd.  
Picton, New South Wales  
Phone: 61-2-4677-3811  
Fax: 61-2-4677-3812

### BRAZIL

Rexnord Correntes Ltda.  
Sao Leopoldo - RS  
Phone: 55-51-579-8022  
Fax: 55-51-579-8029

### CANADA

Rexnord Canada Ltd.  
Scarborough, Ontario  
Phone: 1-416-297-6868  
Fax: 1-416-297-6873

### CHINA

Rexnord China  
Shanghai  
Phone: 86-21-62701942  
Fax: 86-21-62701943

### FLATTOP EUROPE

Rexnord FlatTop Europe b.v.  
's-Gravenzande, The Netherlands  
Phone: 31-174-445-111  
Fax: 31-174-445-222

After Hours/Emergency Phone:  
31-174-445-112

Rexnord Marbett®, S.r.l  
Correggio (RE), Italy  
Phone: 39-0522-639333  
Fax: 39-0522-637778

RMCC Deutschland Kette GmbH  
Aßlar-Werdorf, Germany  
Phone: 49-6443-83140  
Fax: 49-6443-831420

Rexnord FlatTop France  
Orly Cedex  
Phone: 33-1-4173-4220  
Fax: 33-1-4173-4229

### MEXICO

Rexnord S.A. de C.V.  
Queretaro, Qro.  
Phone: 52-442-218-5000  
Fax: 52-442-218-1090

### UNITED STATES

Customer Service  
Phone: 1-866-REXNORD  
(1-866-739-6673)  
Fax: 1-614-675-1898  
E-mail: rexnordcs(state)@rexnord.com  
Example: rexnordcsohio@rexnord.com

Rexnord FlatTop North America  
Grafton, Wisconsin  
Phone: 1-262-376-4700  
Fax: 1-262-376-4720

Rexnord International - Power Transmission  
Milwaukee, Wisconsin  
Phone: 1-414-643-2366  
Fax: 1-414-643-3222  
international2@rexnord.com

### ALL COUNTRIES NOT LISTED

Rexnord FlatTop Europe b.v.  
's-Gravenzande, The Netherlands  
Phone: 31-174-445-111  
Fax: 31-174-445-222

After Hours/Emergency Phone:  
31-174-445-112



Rexnord FlatTop Europe b.v. [flattopeurope@rexnord.com](mailto:flattopeurope@rexnord.com) [www.rexnordflattop.com](http://www.rexnordflattop.com)

Rexnord FlatTop North America 1272 Dakota Drive Grafton, WI [www.rexnord.com](http://www.rexnord.com)

©2007 Rexnord Industries, LLC

stock number month/year Delzer Litho Printed in USA

## Rexnord® TableTop® and MatTop® Chains



### Rexnord® 2010 Series MatTop® Integrated Side Rails

#### OPTIMIZE PRODUCTIVITY

Rexnord®'s new Integrated Side Rail (ISR) system for 2 inch pitch 2010 Series MatTop® chain drastically reduces product loss and damage on incline and decline conveyors for snack foods, fruits and vegetables, confectionary, poultry, and other food processing applications .

Integrally molded into the 2010 chain, the Integrated Side Rail is positioned flush with 2010 Pushers, fully enclosing conveyed product on inclines and declines, even in difficult “over-the-top” positions. This uniquely designed Rexnord® Integrated Side Rail system ensures 100% product retention on incline-decline conveyors , and eliminates product loss and damage from trapped or dropped product.

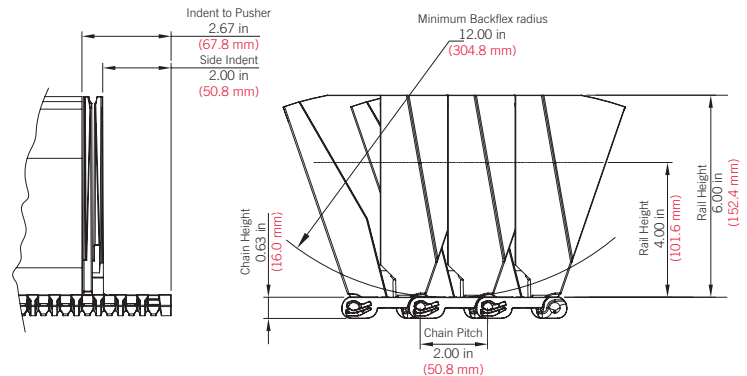
The maximum-height 6 inch ISR model increases conveyor capacity and can be used with high-capacity 6 inch straight and curved Pushers. For more compact construction, choose the standard 4 inch ISR model.

Rexnord®'s new Integrated Side Rail system simplifies conveyor construction and significantly improves cleanability. Hard-to-clean static guides that trap product are eliminated, so overall conveyor system cleaning is improved.

Use Rexnord®'s new high-capacity, easy-release 2010 Integrated Side Rail system on new or existing conveyors to minimize product loss and save substantially on production costs.

## Features & Benefits

- Fully enclosed moving Integrated Side Rails increases productivity by eliminating product loss on incline conveyors.
- Replacing static conveyor guides with Rexnord Integrated Side Rails eliminates product damage, increases conveyor hygiene, simplifies conveyor construction, and reduced conveyor maintenance.
- 4 and 6 inch high-capacity models ensure fully closed systems when 10-teeth or larger sprockets are used.
- 2010 Integrated Side Rail has a  $2\frac{2}{3}$  inch fixed indent to the pusher, and 12 inch min. backflex radius for both 4 inch high and 6 inch high models.
- Robust ,stable side rail system eliminates chain damage and jamming issues found with conventional sideguards.
- Robust hinge and pin design of Rexnord 2010 Series MatTop chain increases reliability.
- Easy retrofit design for existing incline conveyors with static guides or conventional side-guard systems.
- Available in white and blue materials with Microban® antibacterial product protection. Though not a replacement for good hygiene practices, Microban ensures improved hygiene, especially in between cleaning operations. Microban is safe, durable and effective.



Microban is a registered trademark of Microban Products Company.  
Rexnord, TableTop and MatTop are registered trademarks of Rexnord Industries, LLC. All rights reserved.

### WORLDWIDE CUSTOMER SERVICE

#### AUSTRALIA

Rexnord Australia Pty. Ltd.  
Picton, New South Wales  
Phone: 61-2-4677-3811  
Fax: 61-2-4677-3812

#### BRAZIL

Rexnord Correntes Ltda.  
Sao Leopoldo - RS  
Phone: 55-51-579-8022  
Fax: 55-51-579-8029

#### CANADA

Rexnord Canada Ltd.  
Scarborough, Ontario  
Phone: 1-416-297-6868  
Fax: 1-416-297-6873

#### CHINA

Rexnord China  
Shanghai  
Phone: 86-21-62701942  
Fax: 86-21-62701943

#### FLATTOP EUROPE

Rexnord FlatTop Europe b.v.  
's-Gravenzande, The Netherlands  
Phone: 31-174-445-111  
Fax: 31-174-445-222

After Hours/Emergency Phone:  
31-174-445-112

Rexnord Marbett®, S.r.l  
Correggio (RE), Italy  
Phone: 39-0522-639333  
Fax: 39-0522-637778

RMCC Deutschland Kette GmbH  
Aßlar-Werdorf, Germany  
Phone: 49-6443-83140  
Fax: 49-6443-831420

Rexnord FlatTop France  
Orly Cedex  
Phone: 33-1-4173-4220  
Fax: 33-1-4173-4229

#### MEXICO

Rexnord S.A. de C.V  
Queretaro, Qro.  
Phone: 52-442-218-5000  
Fax: 52-442-218-1090

#### UNITED STATES

Customer Service  
Phone: 1-866-REXNORD  
(1-866-739-6673)  
Fax: 1-614-675-1898  
E-mail: rexncdcs(state)@rexnord.com  
Example: rexncdcsOhio@rexnord.com

Rexnord FlatTop North America  
Grafton, Wisconsin  
Phone: 1-262-376-4700  
Fax: 1-262-376-4720

Rexnord International - Power Transmisson  
Milwaukee, Wisconsin  
Phone: 1-414-643-2366  
Fax: 1-414-643-3222  
international2@rexnord.com

#### ALL COUNTRIES NOT LISTED

Rexnord FlatTop Europe b.v.  
's-Gravenzande, The Netherlands  
Phone: 31-174-445-111  
Fax: 31-174-445-222

After Hours/Emergency Phone:  
31-174-445-112